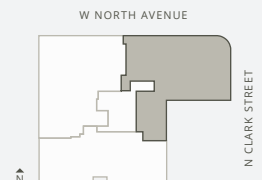


# RESIDENCE PH-1001

4 BEDROOM | 3.5 BATH  
4,308 INTERIOR SQ FT | 632 BALCONY SQ FT | 640 ROOF TERRACE SQ FT



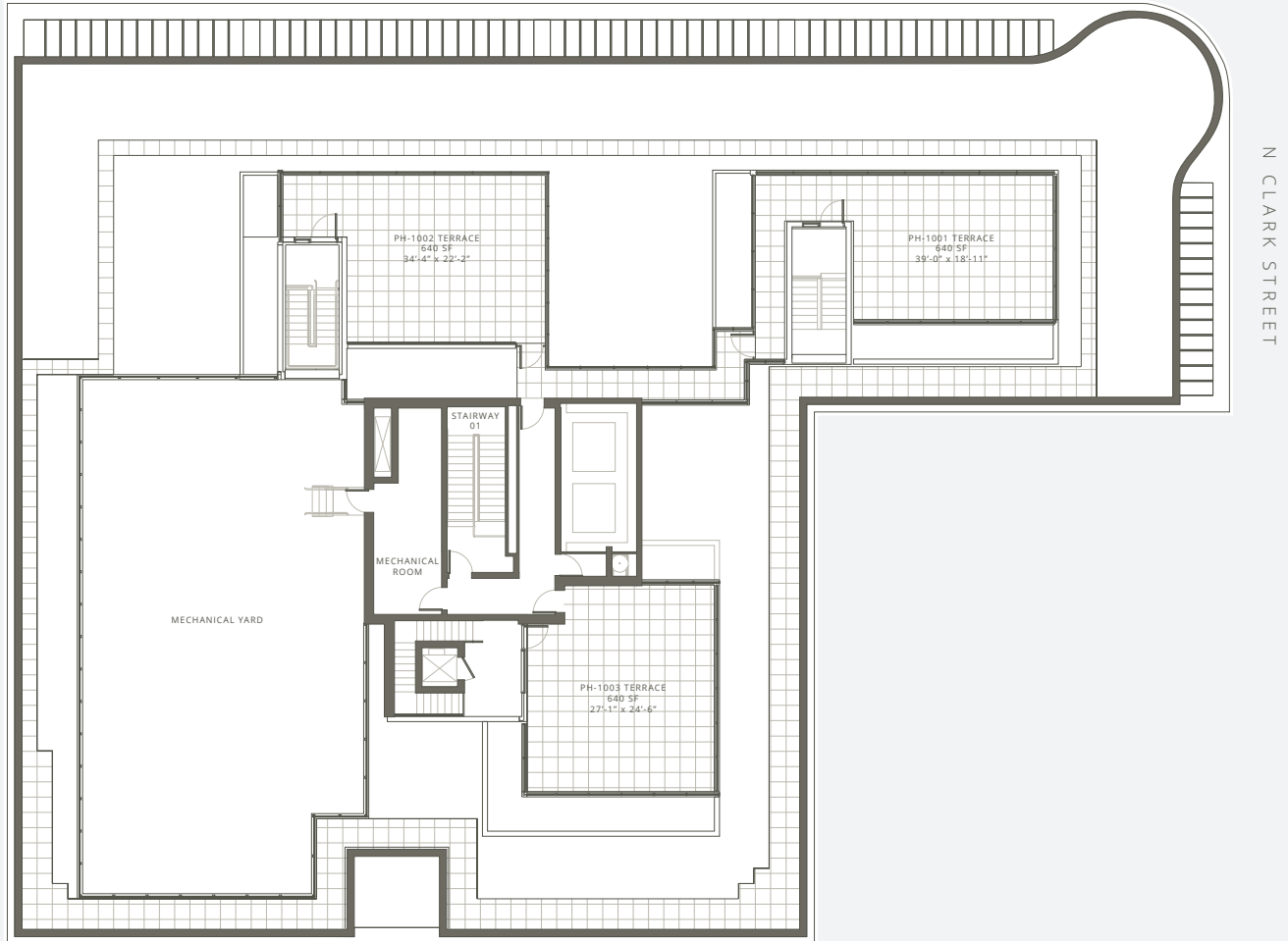
1550ONTHEPARK.COM | 312-764-1550 | 1550 N CLARK STREET, CHICAGO

**GOLUB** **CIM** **AVODA GROUP** @properties

**FifteenFifty**  
ON THE PARK

Square footage measurements are approximate only based upon initial architectural drawings, and may be based on various measurement methodologies, subject to construction variances and tolerances, as well as redesign, and may vary. Net usable square footage is less than any gross square footage indicated. Developer reserves the right to make modifications and changes in design of the project, buildings, condominium units and products and finishes in its sole discretion in accordance with terms of applicable laws and regulations. The project graphics, renderings and text provided herein are copyrighted works owned by the developer. Unauthorized reproduction, display or other dissemination of such materials is strictly prohibited. All floorplans shown are for illustrative purposes only. Floorplans may not depict final designs of units as constructed. Room sizes shown, typical square footages, shape and size of rooms, furniture, cabinets and furnishings, as depicted, are approximate and may not be drawn to scale. The final size, shape and square footages of a unit are subject to constructed measurements, and subject to construction variances. Plans and dimensions may contain minor variations from floor to floor. Developer reserves the right to make changes and modifications to plans, materials, specifications and features without notice or obligation. Obtain the property report or its equivalent by federal, state or local law and read it before signing anything. No federal, state or local agency has judged the merits or value, if any, of this property. Where used, developer shall mean 1550 North Clark (Chicago) Owner LLC and its affiliated entities and their respective managers, members, directors, shareholders, partners, agents, affiliates and employees. Developer # 2551714.

W NORTH AVENUE



## ROOFTOP TERRACES

PH-1001 | PH-1002 | PH-1003

1550ONTHEPARK.COM | 312-764-1550 | 1550 N CLARK STREET, CHICAGO

**GOLUB** **CIM** **AVODA GROUP** **@properties**  

**FifteenFifty**  
ON THE PARK

Square footage measurements are approximate only based upon initial architectural drawings, and may be based on various measurement methodologies, subject to construction variances and tolerances, as well as redesign, and may vary. Net usable square footage is less than any gross square footage indicated. Developer reserves the right to make modifications and changes in design of the project, buildings, condominium units and products and finishes in its sole discretion in accordance with terms of applicable laws and regulations. The project graphics, renderings and text provided herein are copyrighted works owned by the developer. Unauthorized reproduction, display or other dissemination of such materials is strictly prohibited. All floorplans shown are for illustrative purposes only. Floorplans may not depict final designs of units as constructed. Room sizes shown, typical square footages, shape and size of rooms, furniture, cabinets and furnishings, as depicted, are approximate and may not be drawn to scale. The final size, shape and square footages of a unit are subject to constructed measurements, and subject to construction variances. Plans and dimensions may contain minor variations from floor to floor. Developer reserves the right to make changes and modifications to plans, materials, specifications and features without notice or obligation. Obtain the property report or its equivalent by federal, state or local law and read it before signing anything. No federal, state or local agency has judged the merits or value, if any, of this property. Where used, developer shall mean 1550 North Clark (Chicago) Owner LLC and its affiliated entities and their respective managers, members, directors, shareholders, partners, agents, affiliates and employees. Developer # 2551714.